



KiilTO

Product Carbon Footprint report

Kiilto Pro Window

Product name: Kiilto Pro Window

Package size used for the calculation: 3 x 5 l canister in cardboard box

Application: Cleaner for glass surfaces

Dilution: 10 ml in 1 l of water/ 5 dl in 1 l of water

Period of PCF calculation: 1.1.2023-31.12.2023

Version: 1 (28.11.2024)

Date of first publication: 28.11.2024

Declared unit: 1 kg of product in its packaging¹

Location of production: Finland



¹ The declared unit of 1 kg of product in its packaging does not include the weight of the packaging in the 1kg

Data sources:

Primary data for the carbon footprint is based on production from the year 2023. Primary data was collected from KiiltoClean Oy and from suppliers of raw materials and packaging materials.

Where the collected data was not comprehensive, it was complemented with similar supplier's data and selected generic data. Other calculation data is based on the best available data from databases at the time of preparing the PCF.

PCF calculation standards or guidelines used:

The calculations have been conducted adhering to the main principles of the following standards and guidelines:

ISO 14067:2018 Greenhouse gases — Carbon footprint of products — Requirements and guidelines for quantification

ISO 14044:2006 Environmental management — Life cycle assessment — Requirements and guidelines

ISO 14040:2006 + A1:2020 ISO 14040 Environmental management — Life cycle assessment — Principles and framework

Product category rules (PCR): Detergents and washing preparations 2011:10, Version 4.0.0*

** As a deviation from the Product Category rules, downstream operations (transport to customer, use of the product, and end-of-life of the packaging) have not been included in the calculations.*

Standards and guidelines leave room for interpretation and personal assessment. Discretion should be used when comparing studies to each other due to methodologies potentially not being comparable.

PRODUCT COMPOSITION

Product Content	Amount	Unit
Ethanol	35-40	%
Secondary Packaging		
Cardboard		
Primary Packaging		
Canister: HDPE (35% recycled HDPE)		
Cap: PP		

PCF RESULTS

Product Composition	Result	Unit
Fossil emissions	0,376	kg CO ₂ -eq
Biogenic emissions	0,015	kg CO ₂ -eq
Land Transformation	0,112	kg CO ₂ -eq

**CARBON
FOOTPRINT**



Database and LCA software used:

The databases used were Ecoinvent 3 database (version 3.9.1). The LCA Software used was SimaPro Analyst version 9.5.0.2.

Impact assessment method:

IPCC 2021 GWP100 (excl. CO2 uptake) V1.02

System boundaries: Cradle-to-gate

Including: Production of raw materials and packaging materials, transportation of raw materials and packaging materials, manufacturing at KiiltoClean's site, storage and site-to-site transportation. Activities such as the use of the product and end-of-life were excluded from the system boundaries.

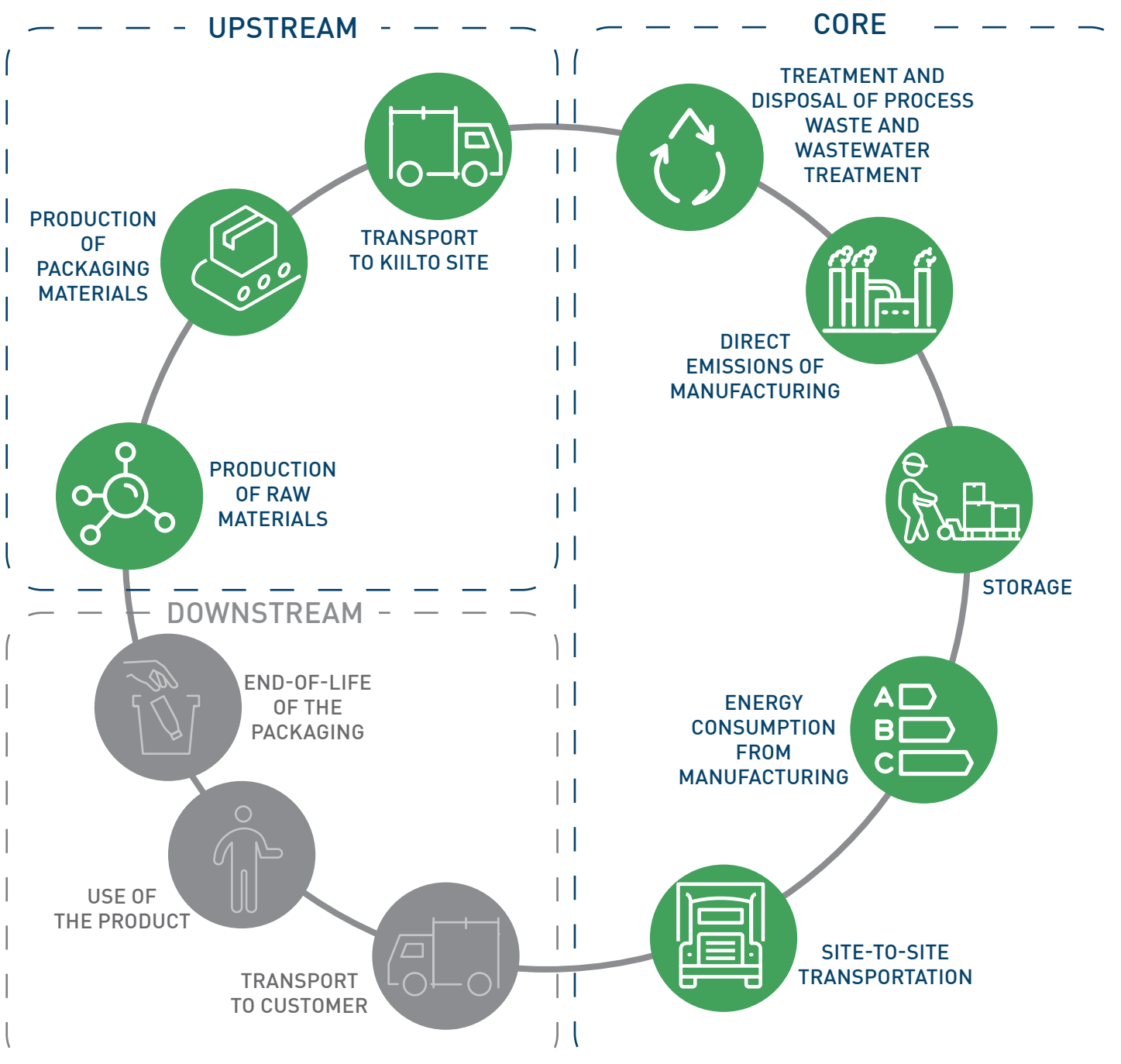


Figure 1 Upstream and core operation emissions were included in this assessment



KiiltoClean Oy | PL/B ox 157, F I-20101 Turku, Finland
Puh./Tel +358 (0)207 710 400
www.kiilto.com

